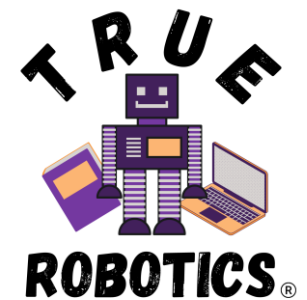
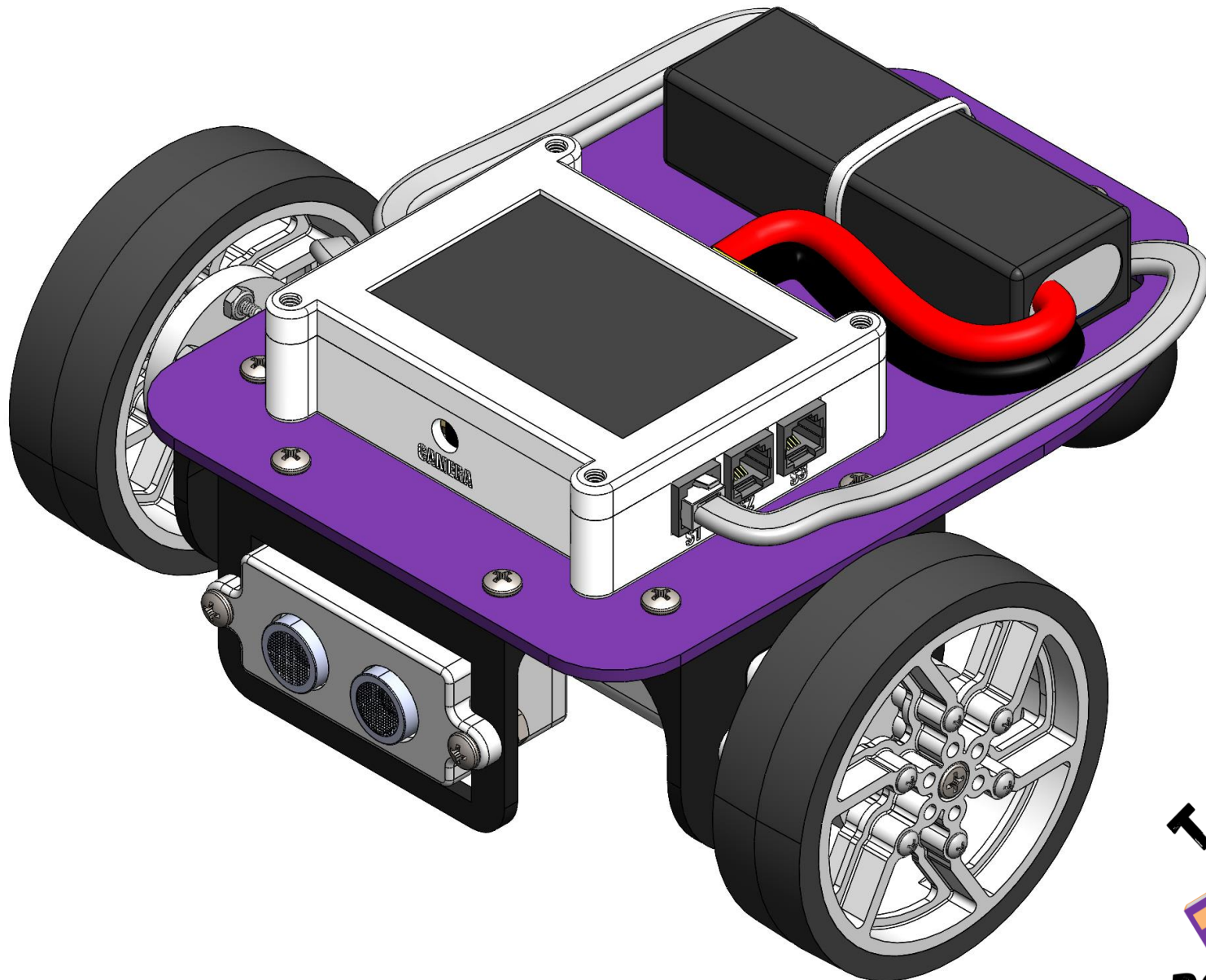
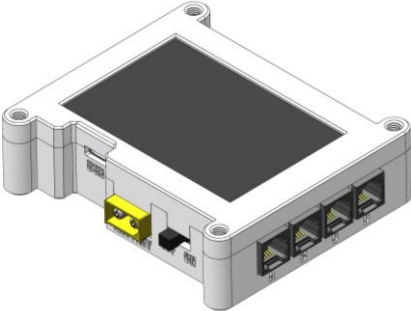

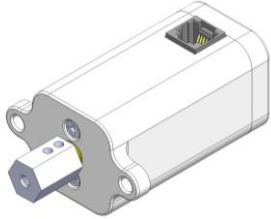
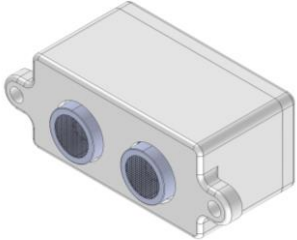

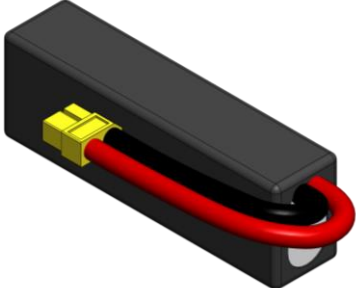

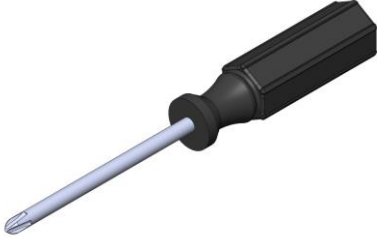
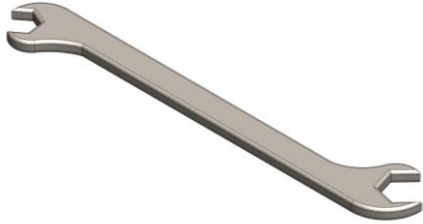


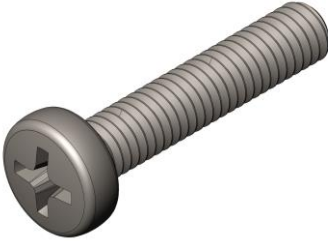


ASSEMBLY INSTRUCTIONS: PILOT

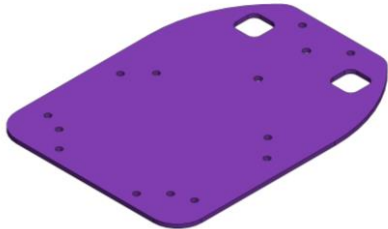




<p>1</p>	<p>CONTROLLER [C]</p>	
<p>2</p>	<p>USB C CORD [USBC]</p>	
<p>3</p>	<p>MOTOR [M]</p>	
<p>4</p>	<p>ULTRASONIC SENSOR [US]</p>	

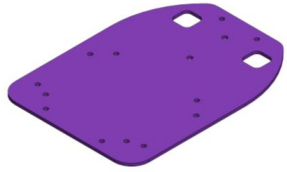
<p>5</p>	<p>WIRE [WR]</p>	
<p>6</p>	<p>BATTERY [B]</p>	
<p>7</p>	<p>BATTERY CHARGER [BC]</p>	
<p>8</p>	<p>SCREWDRIVER [SD]</p>	

<p>9</p>	<p>OPEN WRENCH [OW]</p>	
<p>10</p>	<p>ALLEN KEY [AK]</p>	
<p>11</p>	<p>8-32 0.5" PHILIPS SCREW [S1]</p>	
<p>12</p>	<p>M4 SCREW 20MM [S2]</p>	

<p>13</p>	<p>8-32 STAR NUT [N1]</p>	
<p>14</p>	<p>BACK PEG [PG]</p>	
<p>15</p>	<p>MOTOR MOUNT [MM]</p>	
<p>16</p>	<p>ULTRASONIC MOUNT [UM]</p>	

<p>17</p>	<p>BASE PLATE [BP]</p>	 A purple rectangular base plate with rounded corners, featuring two white oval-shaped cutouts on the right side and several small circular holes along the edges.
<p>18</p>	<p>ZIP TIE [ZT]</p>	 A silver-colored metal zip tie with a U-shaped profile, designed to hold components together.
<p>19</p>	<p>TRACTION WHEEL [TT]</p>	 A black traction wheel with a silver-colored hub and a black rubber tire. The hub has a complex, multi-spoke design.

[BP]



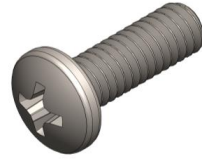
x1

[PG]



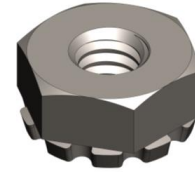
x1

[S1]



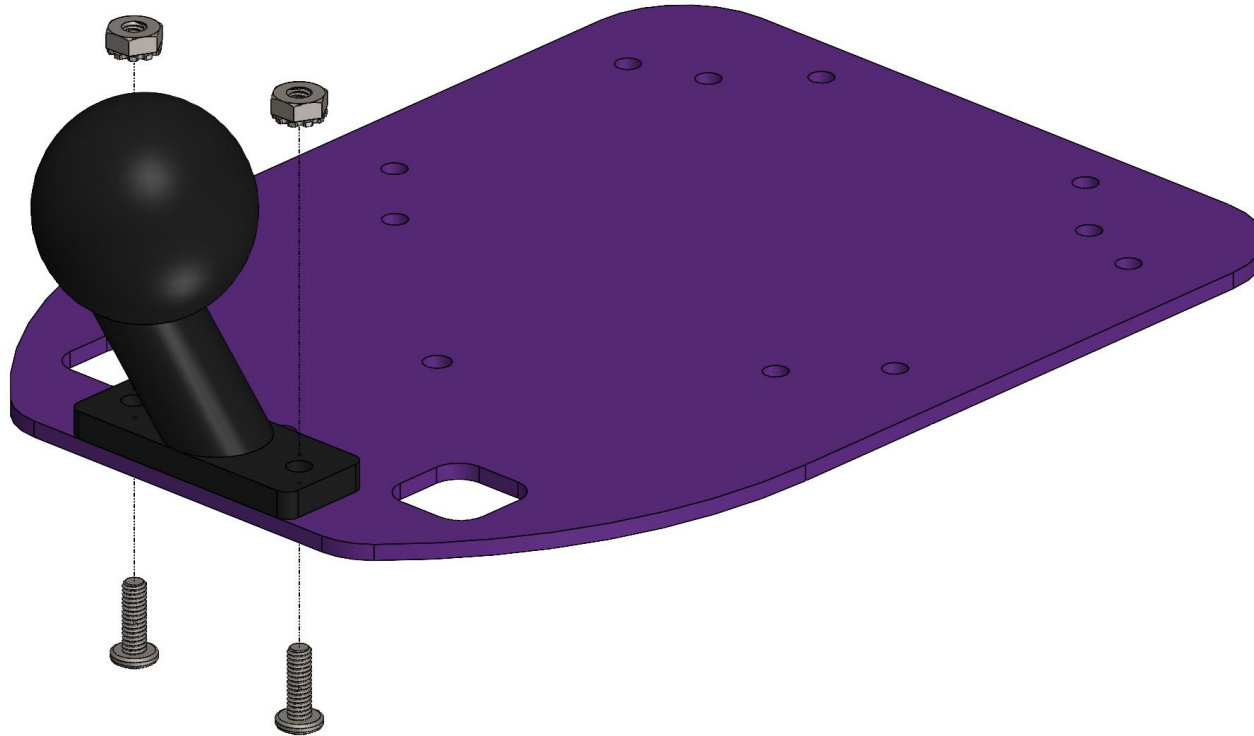
x2

[N1]



x2

1



[UM]



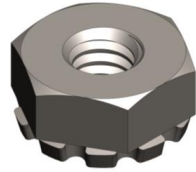
x1

[S1]



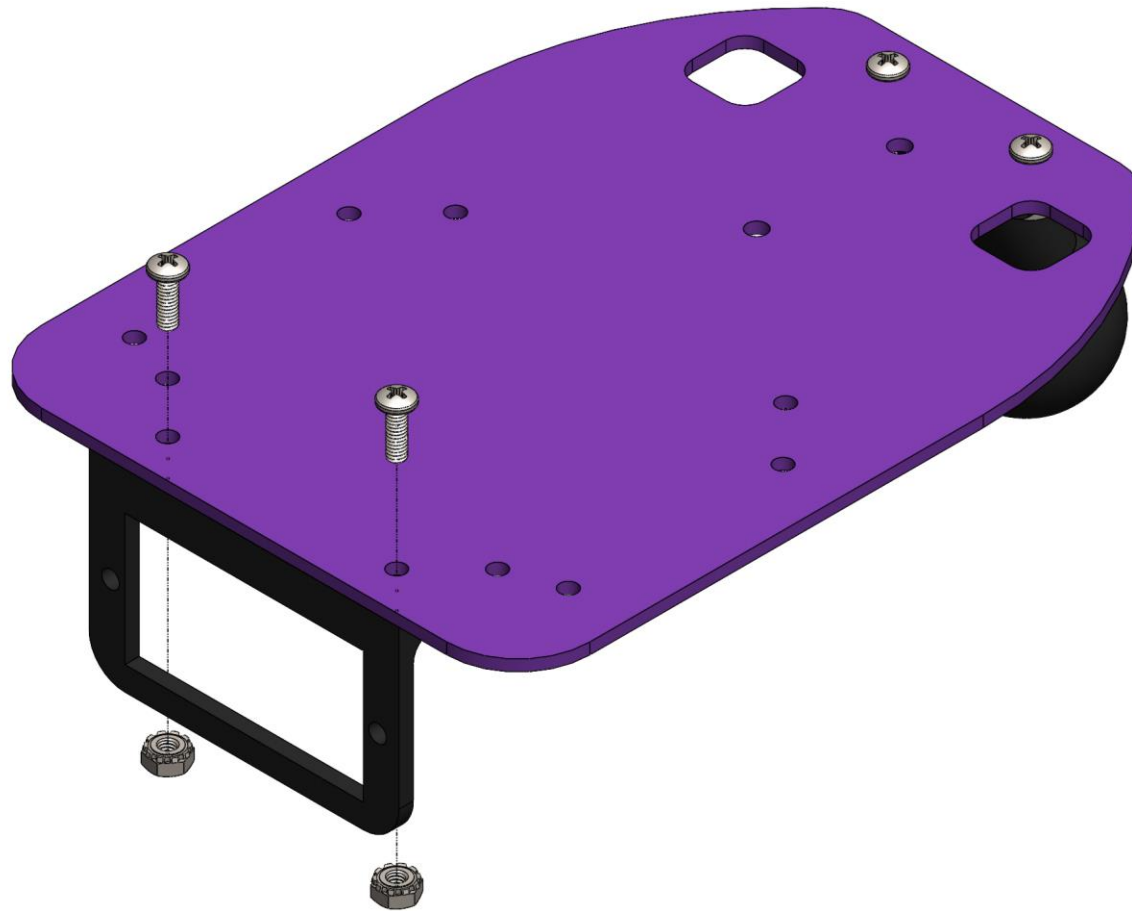
x2

[N1]

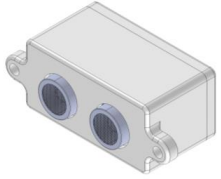


x2

2



[US]



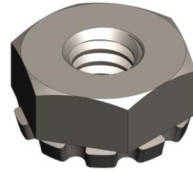
x1

[S1]



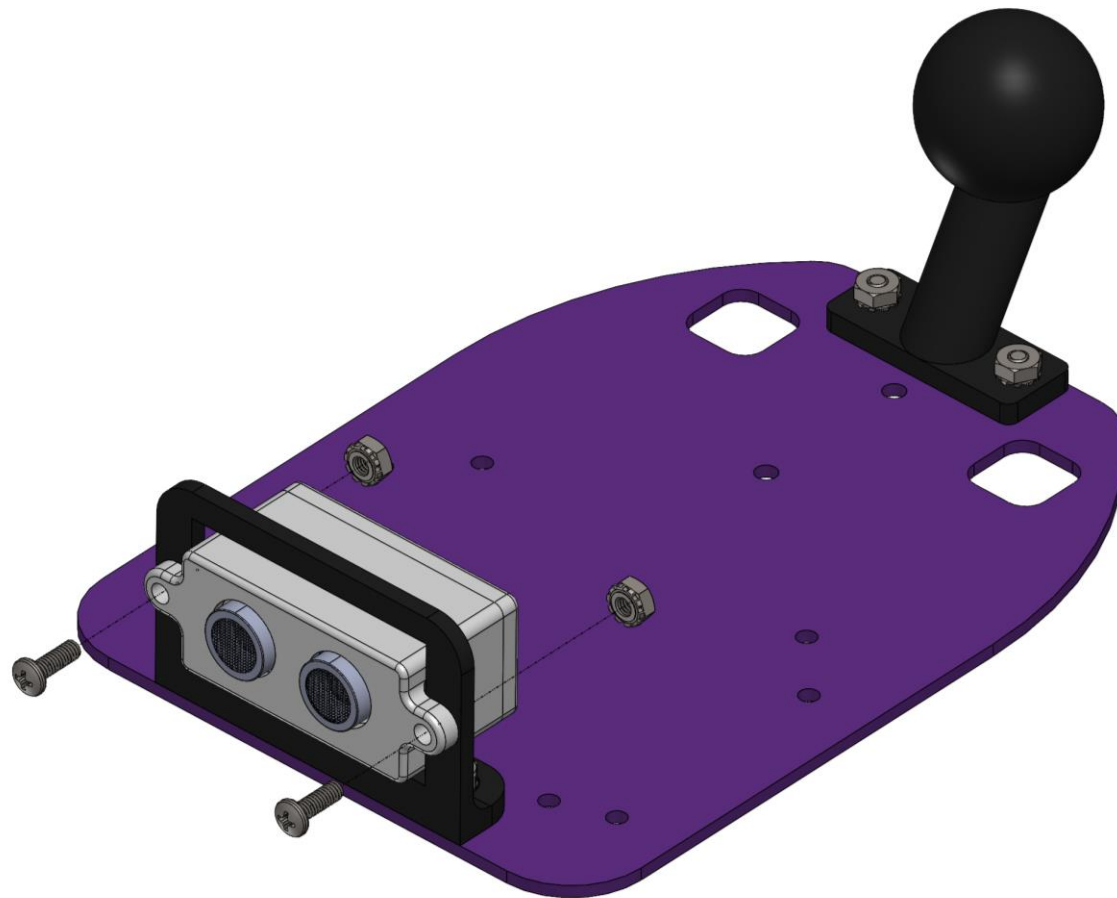
x2

[N1]



x2

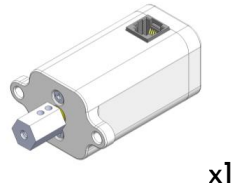
3



[MM]



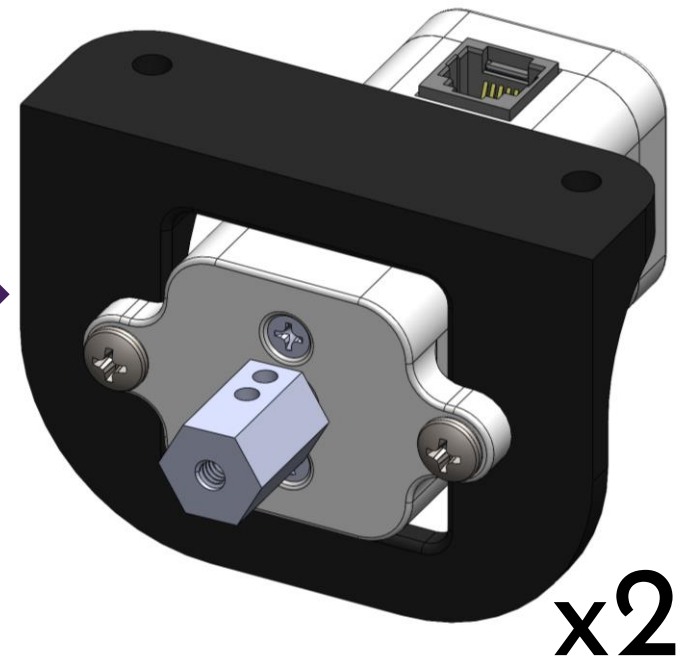
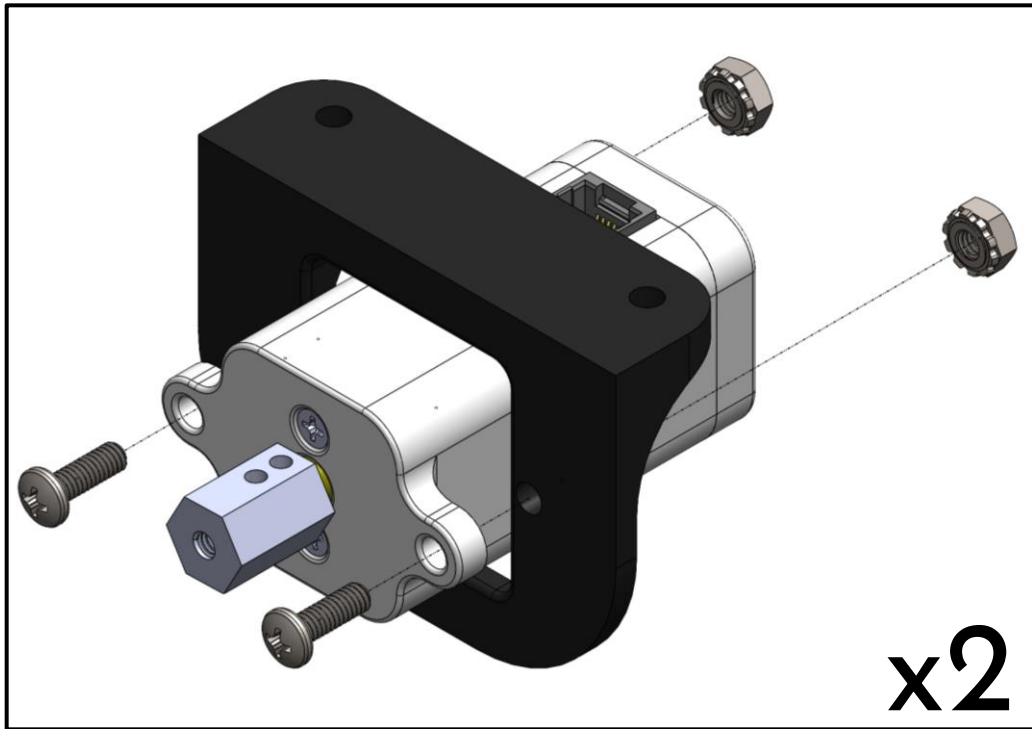
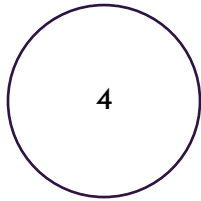
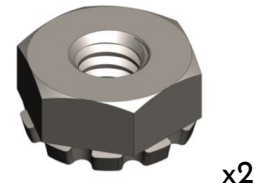
[M]

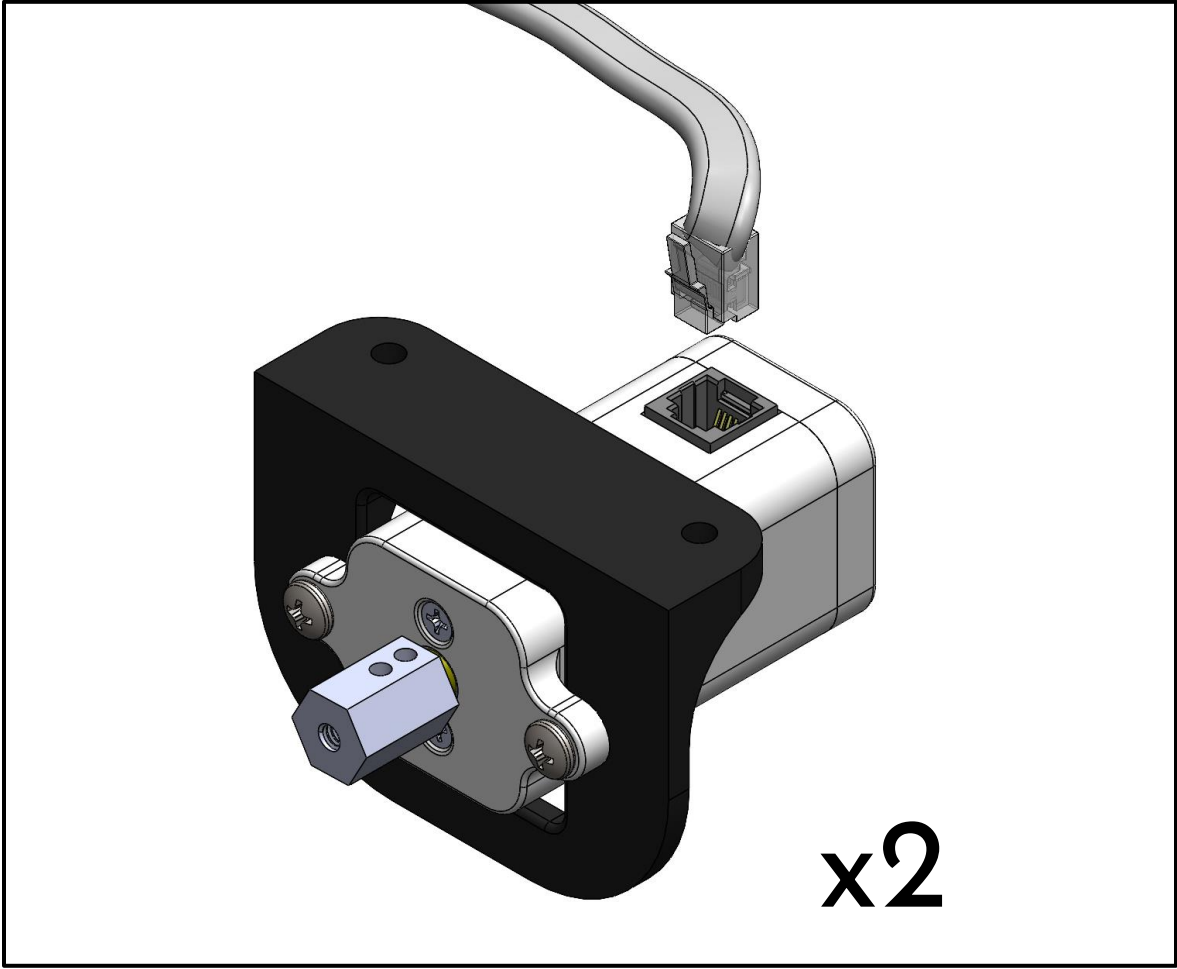
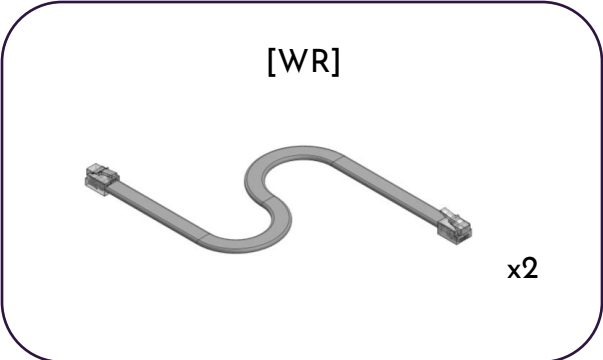


[S1]



[N1]



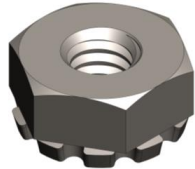


[S1]



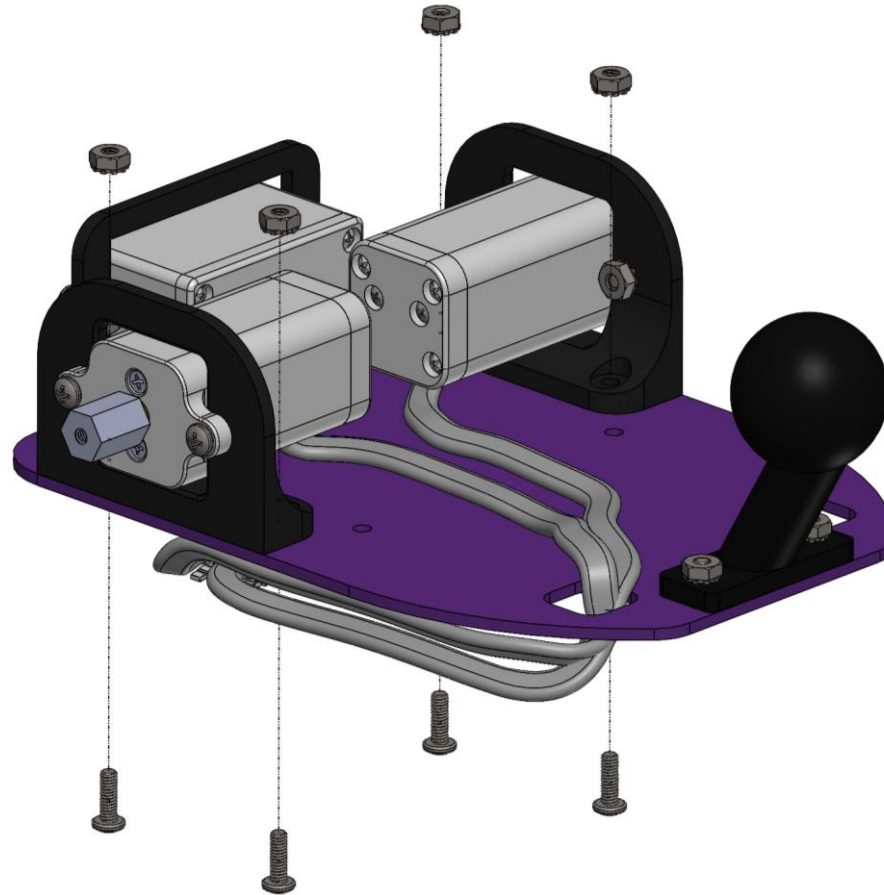
x4

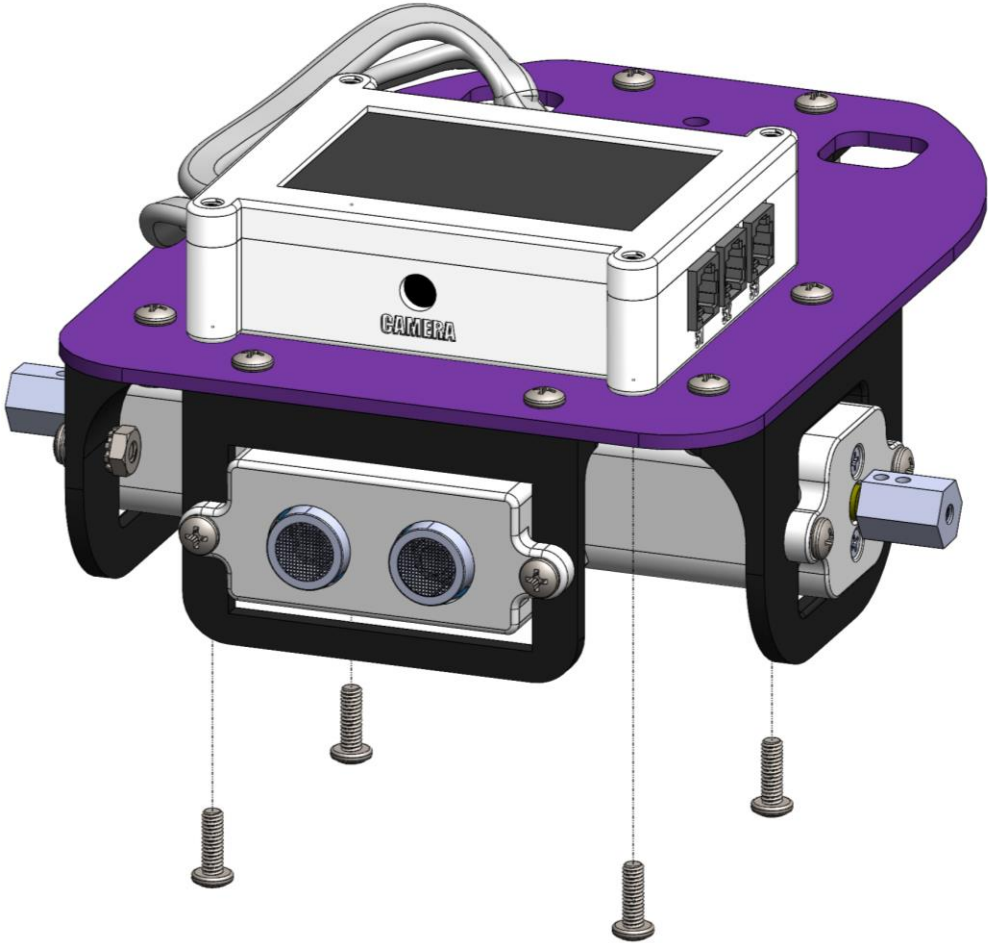
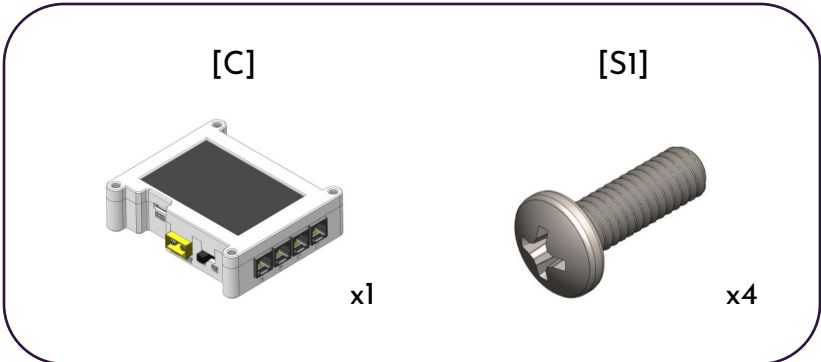
[N1]

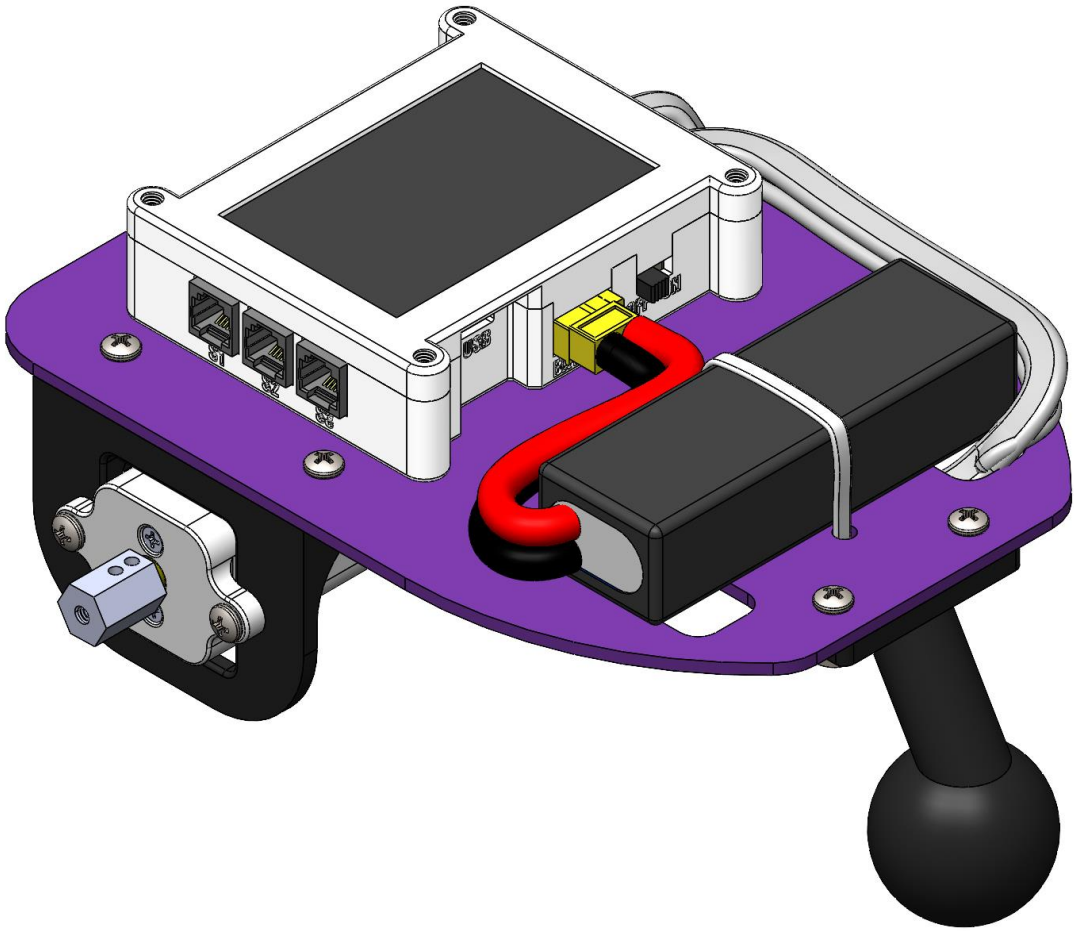
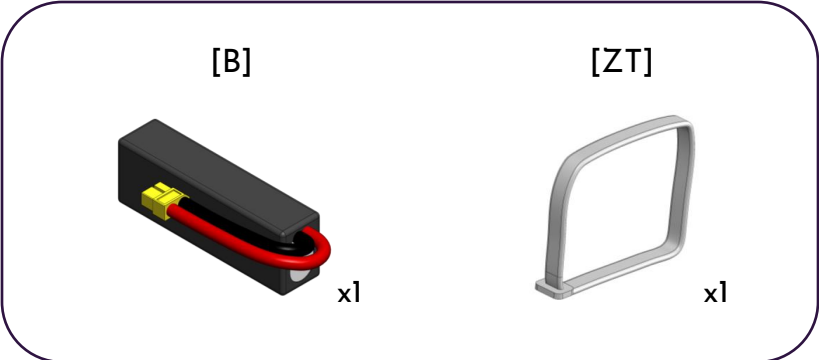


x4

6





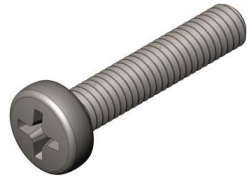


[TT]



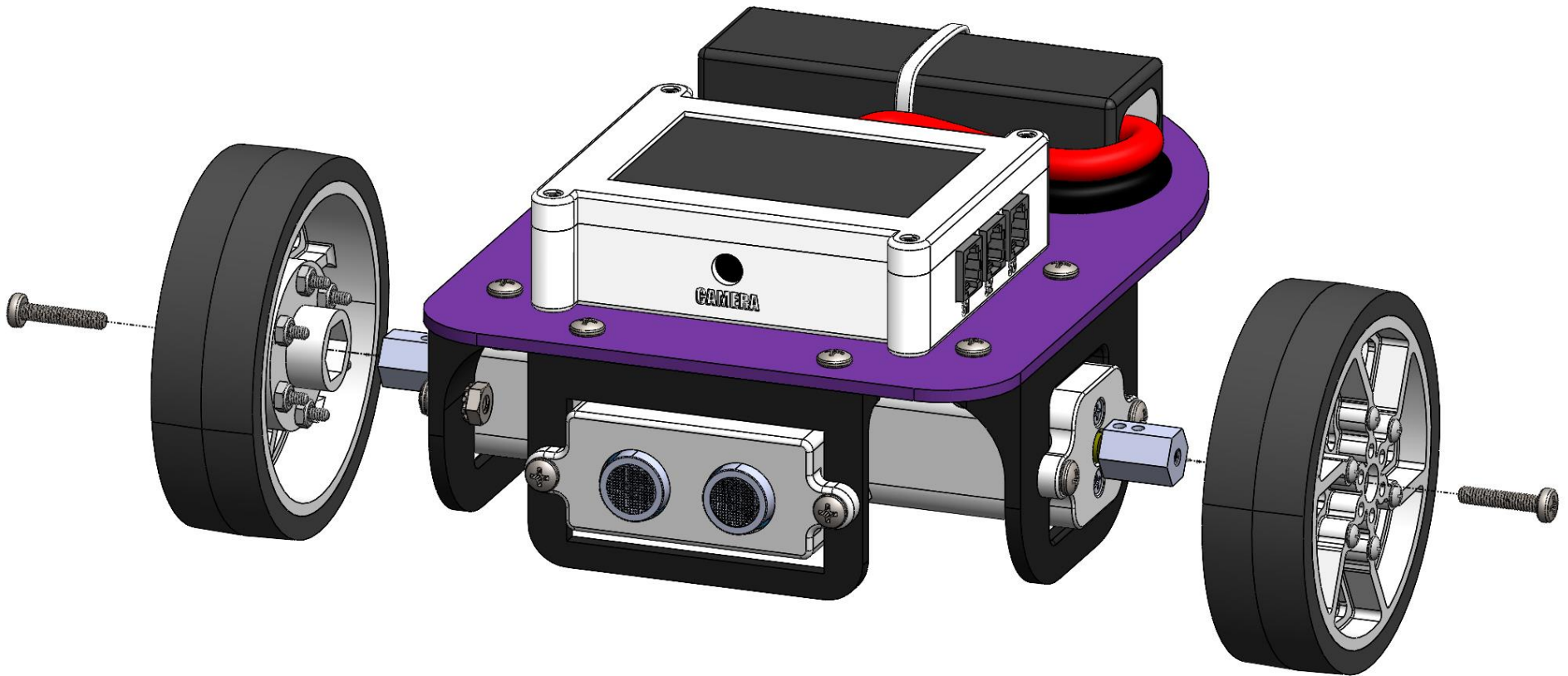
x2

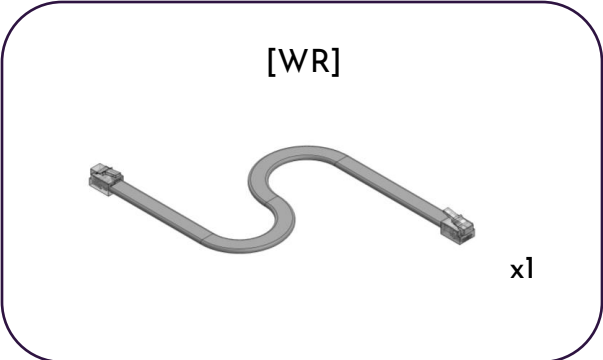
[S2]



x2

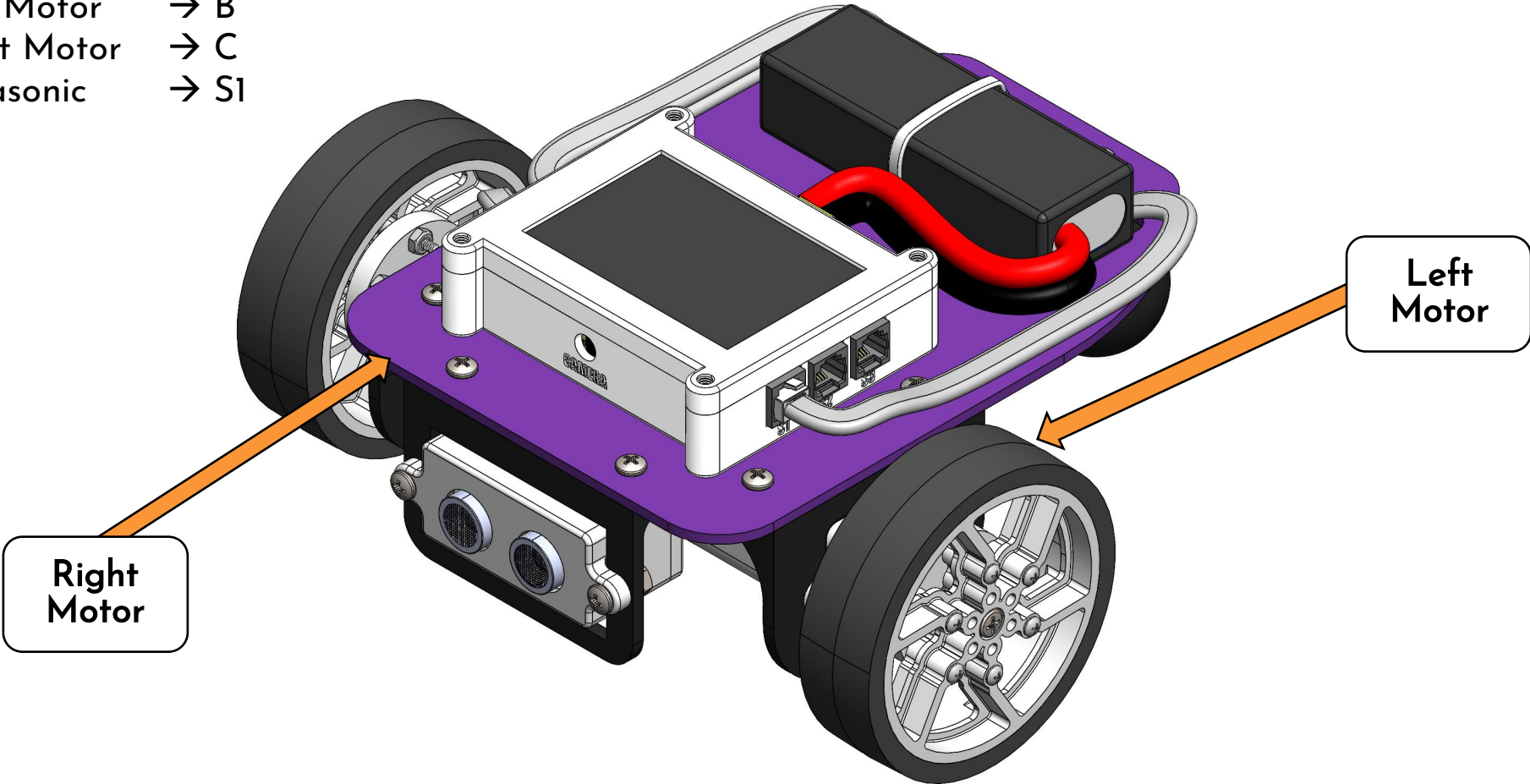
9

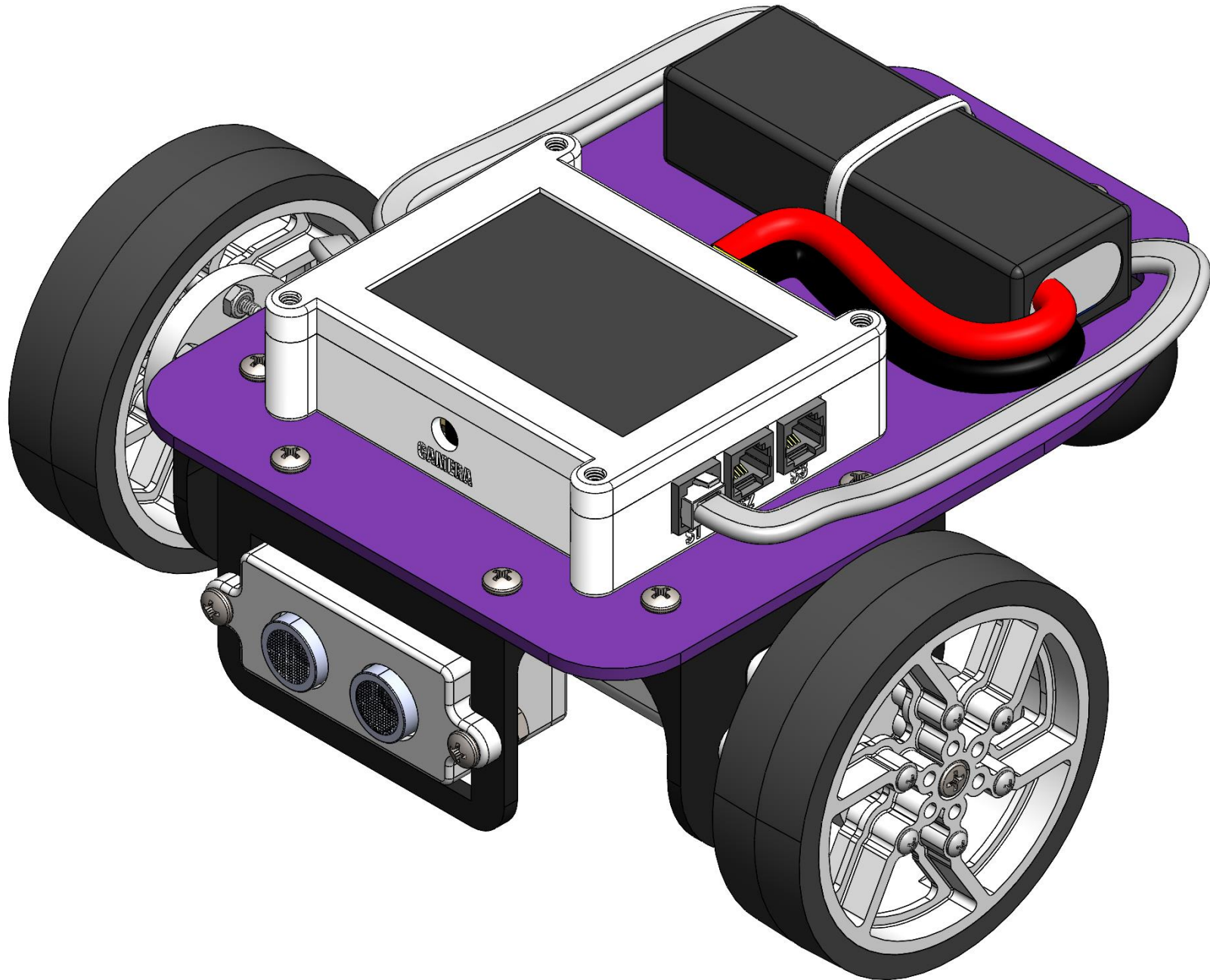




Wire Connections

- Left Motor → B
- Right Motor → C
- Ultrasonic → S1

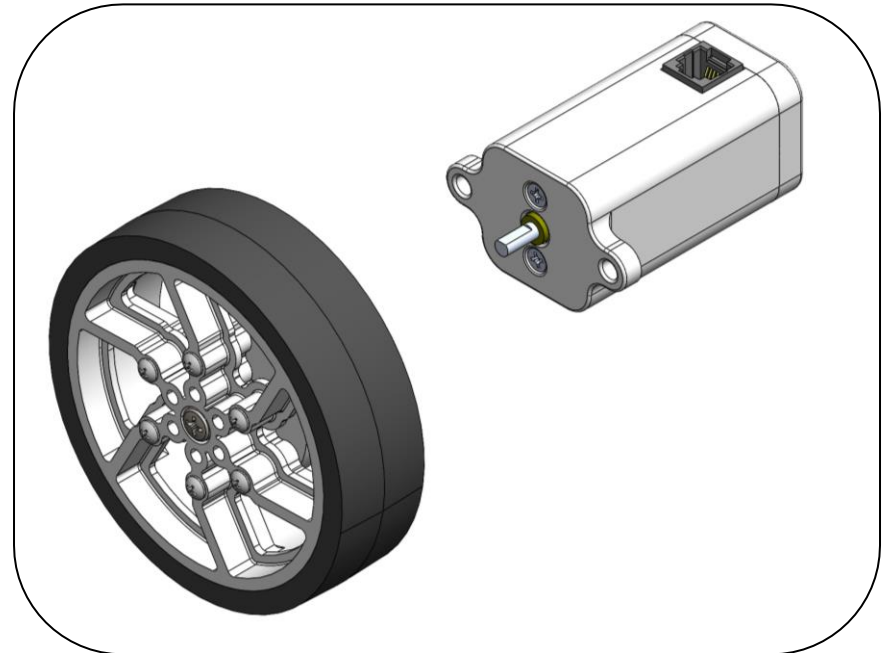
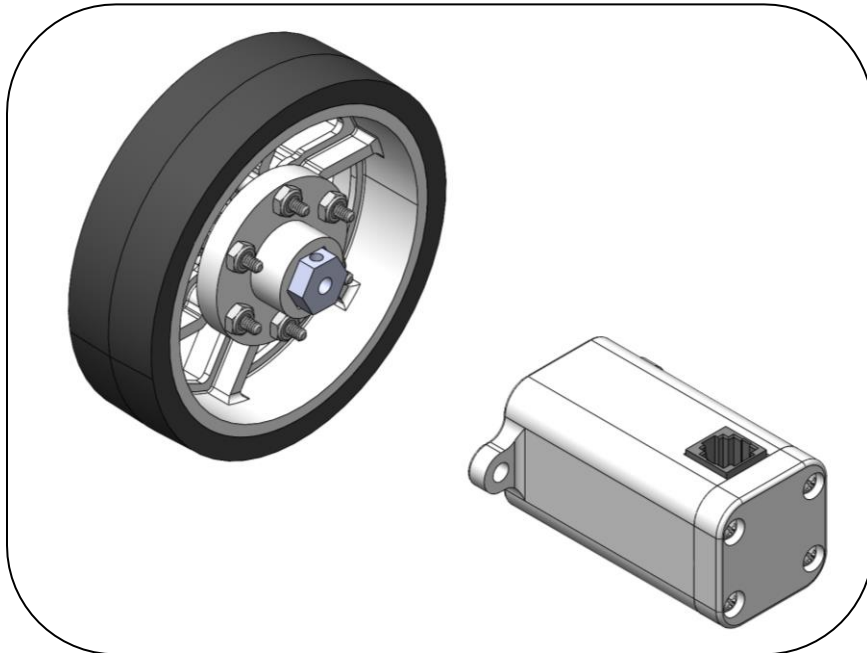




ROBOT TROUBLESHOOTING

MOTOR WHEEL FALLING OFF

Sometimes the motor wheels loosen and fall off the robot and look like this:



Follow the steps on the next page to fix this issue.

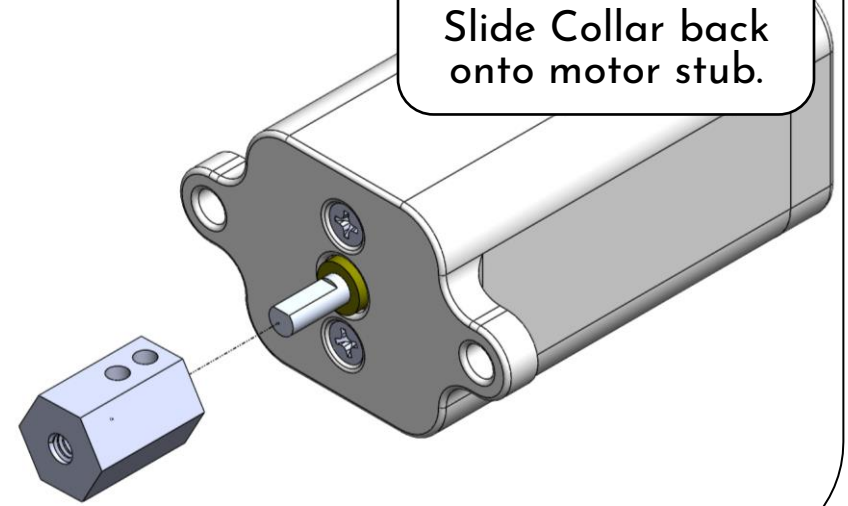
Step 1:

Remove S2 Screw from the center of the wheel.



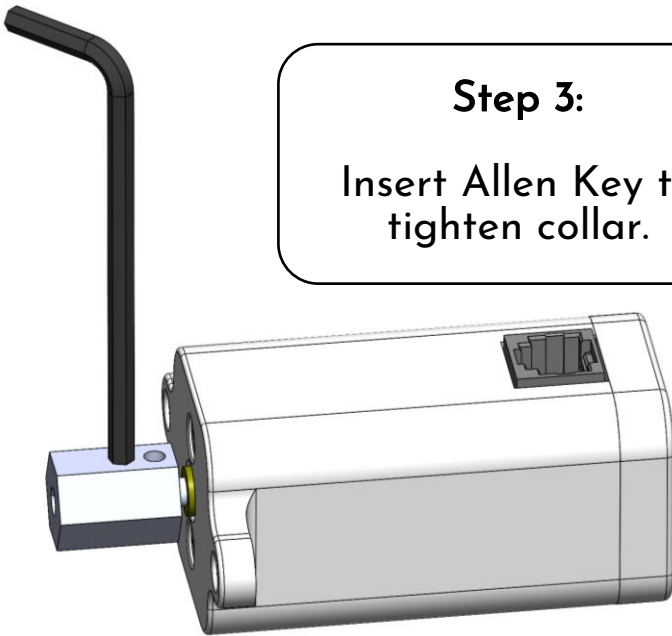
Step 2:

Slide Collar back onto motor stub.



Step 3:

Insert Allen Key to tighten collar.



Step 4:

Put S2 Screw back in center of wheel.

